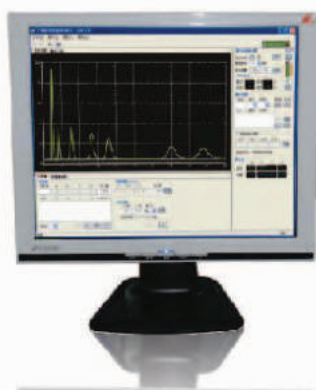


Skyray Instruments



LC-310

Liquid Chromatograph



Environmental Analysis



Agrochemicals



Food



Pharmaceuticals



Petrochemicals

Liquid Chromatograph System

LC-310

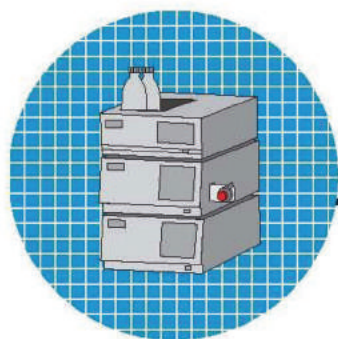
intelligent liquid chromatograph



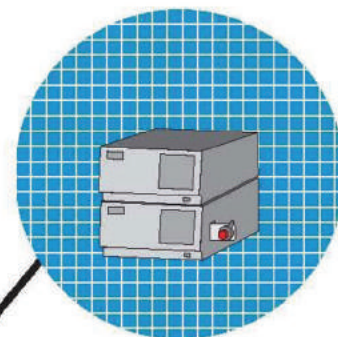
Based on years of comprehensive experience in research and development, LC-310 Liquid Chromatograph achieves the best balance in performance and stability. LC-310 High-performance Liquid Chromatograph features improved separation, sensitivity, speed, accuracy and stability. Advanced series pump and check valve ensure the user can achieve the accuracy and pulsation of solvent delivery.

Liquid Chromatograph

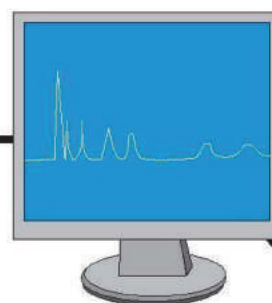
LC-310



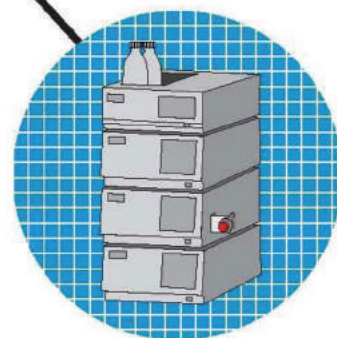
LC-310 Plus
isocratic configuration with column oven



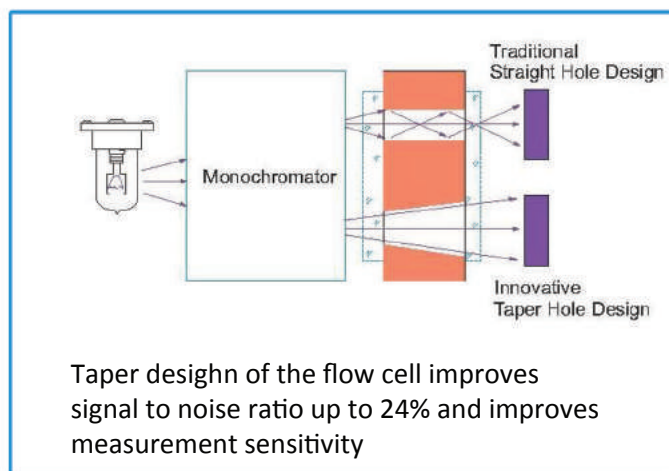
LC-310 Plus
isocratic configuration



USB communication

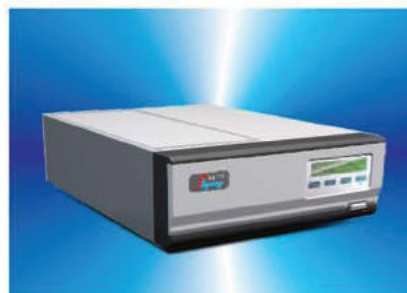


LC-310 Plus
binary high pressure gradient configuration



DM100 Dynamic Mixer

Dynamic mixing technology allows
homogenous mixing of mobile phase,
making the testing more accurate



CO100 Column Oven

Temperature control range: 5 C to 80 C
Temperature control precision: +/- 0.1 C
with microcomputer control

Liquid Chromatograph System

LC-310

Configurations:

- ➔ Standard P100 high pressure constant flow pump
- ➔ UV100 UV detector
- ➔ 7725i manual injector
- ➔ Exformma Pronaos Series chromatographic column
- ➔ WS100 workstation software



The above configurations may vary upon users' requirements.



Technical specifications of the pump:

- ➔ Flow rate Control Range: 0.001~9.999mL/min(step adjustable flow rate:0.001mL/min)
- ➔ Flow rate stability deviation: $S_r \leq 0.3\%$ RSD<0.006%
- ➔ Specification Error S_s : $S_s \leq 2\%$ (Flow rate 1mL/min, pure water, pressure 5~10Mpa, room temperature)
- ➔ Pressure linearity and test accuracy: indicates pressure error smaller than 0.5Mpa (0~42MPa)
- ➔ Pulse pressure: ≤ 0.1 MPa (Flow rate 1mL/min, pressure 5~10Mpa)
- ➔ Airproof of pump: pressure 42MPa, time 10min, and pressure fall< 0.5MPa
- ➔ Maximal operating pressure: 42MPa(flow rate: 0.001~9.999mL/min)
- ➔ Dimension: 450mmX300mmX160mm (length x width x height)

Technical specifications of UV detector:

- ➔ Wavelength range: 190—680nm
- ➔ Spectral bandwidth: 8nm
- ➔ Wavelength indicated value error: $\leq \pm 1$ nm
- ➔ Wavelength repetitiveness: better than 0.1nm
- ➔ Baseline noise: $\leq 2 \times 10^{-5}$ AU(Dynamic)
- ➔ Baseline drift: $\leq 2 \times 10^{-4}$ AU(Dynamic)
- ➔ Minimum detectable concentration: 1×10^{-8} g/ mL (naphthalene/methanol solution)
- ➔ Dimension: 450mmX300mmX160mm (length x width x height)



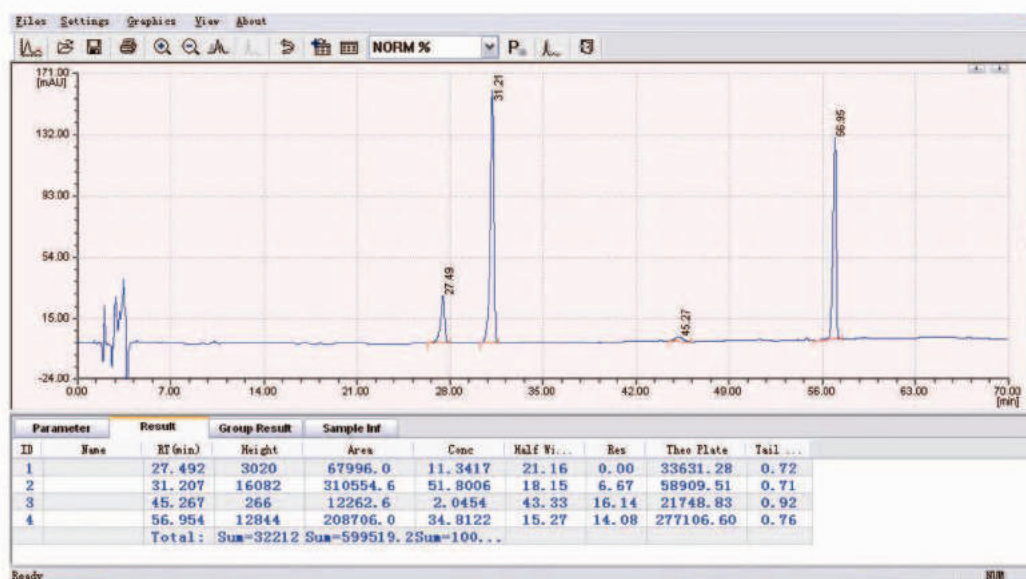
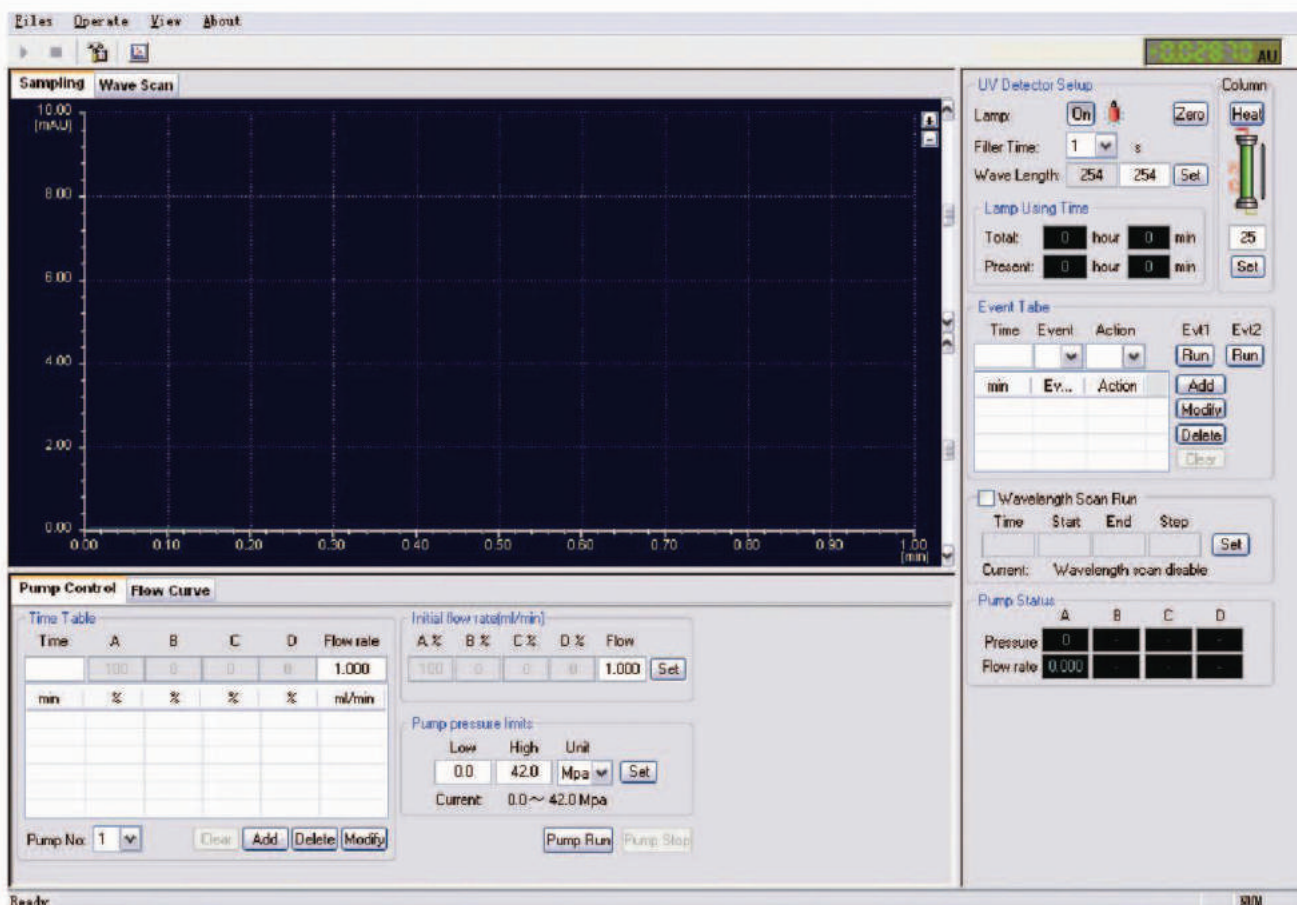
Liquid Chromatograph System

LC-310

Powerfull and easy-to-use WS100 Work Station Software

WS100 Work Station Software delivers advanced control and features fully automatic integration of UV Detector and high pressure constant flow pump

Employing full digital control, WS100 Work Station simplifies workflow and generates maximum precision



Skyray Instruments



Skyray Instruments USA, Inc
1717 N. Akard Street, Ste 2520
Dallas, Texas, 75201 USA

+1 972 638 9035
www.skyrayinstruments.com
sales@skyrayinstruments.com

• Spectroscopy • Chromatography • Mass Spectrometry

Skyray Instruments specializes in the R&D, manufacturing and sales of analytical and measuring instruments in Spectroscopy, Chromatography and Mass Spectroscopy fields. Our Products include X-ray Fluorescence Spectrometry, Atomic Absorption Spectrometry, Gas Chromatography, Inductively Coupled Plasma Spectrometry, Mass Spectrometry and many others

Skyray has been providing customers around the world with reliable and affordable Scientific Instruments for more than 20 years